

low
voltage
system

MOTEL

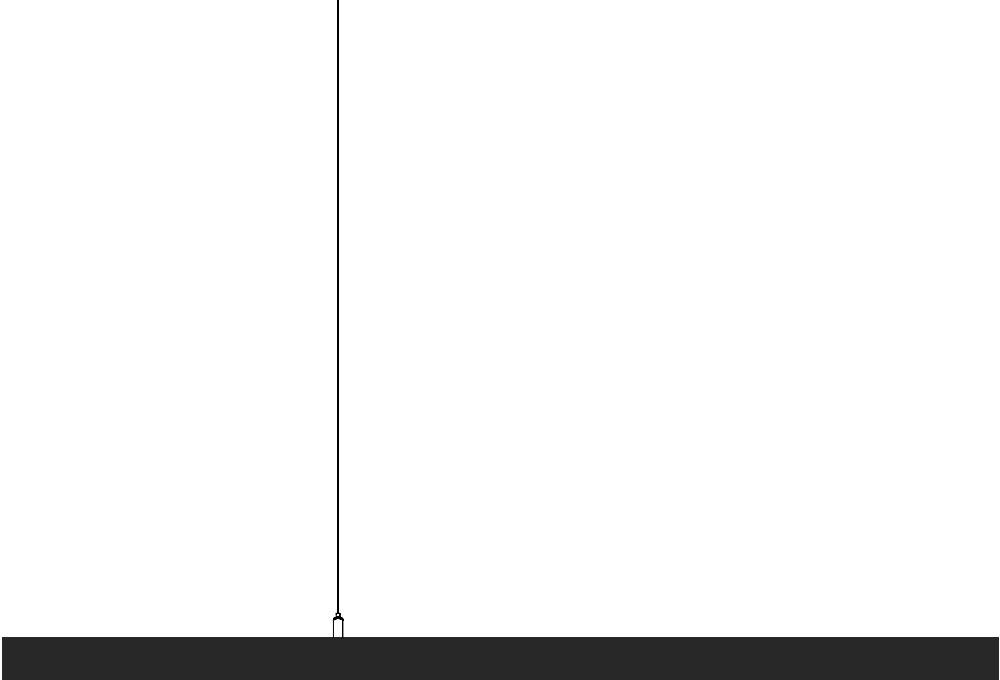
Clight

www.clight-led.com



FLOW

low voltage system

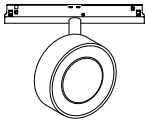
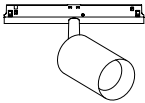


4-9

10-11

12-13

TRACKS

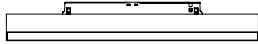


TON

TOMI

LIGHT STRIPE

14-15



DOTS

16-17



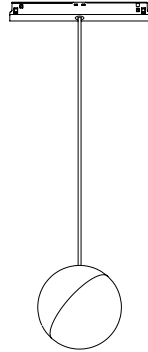
OUT

18-19



MOON

20-21



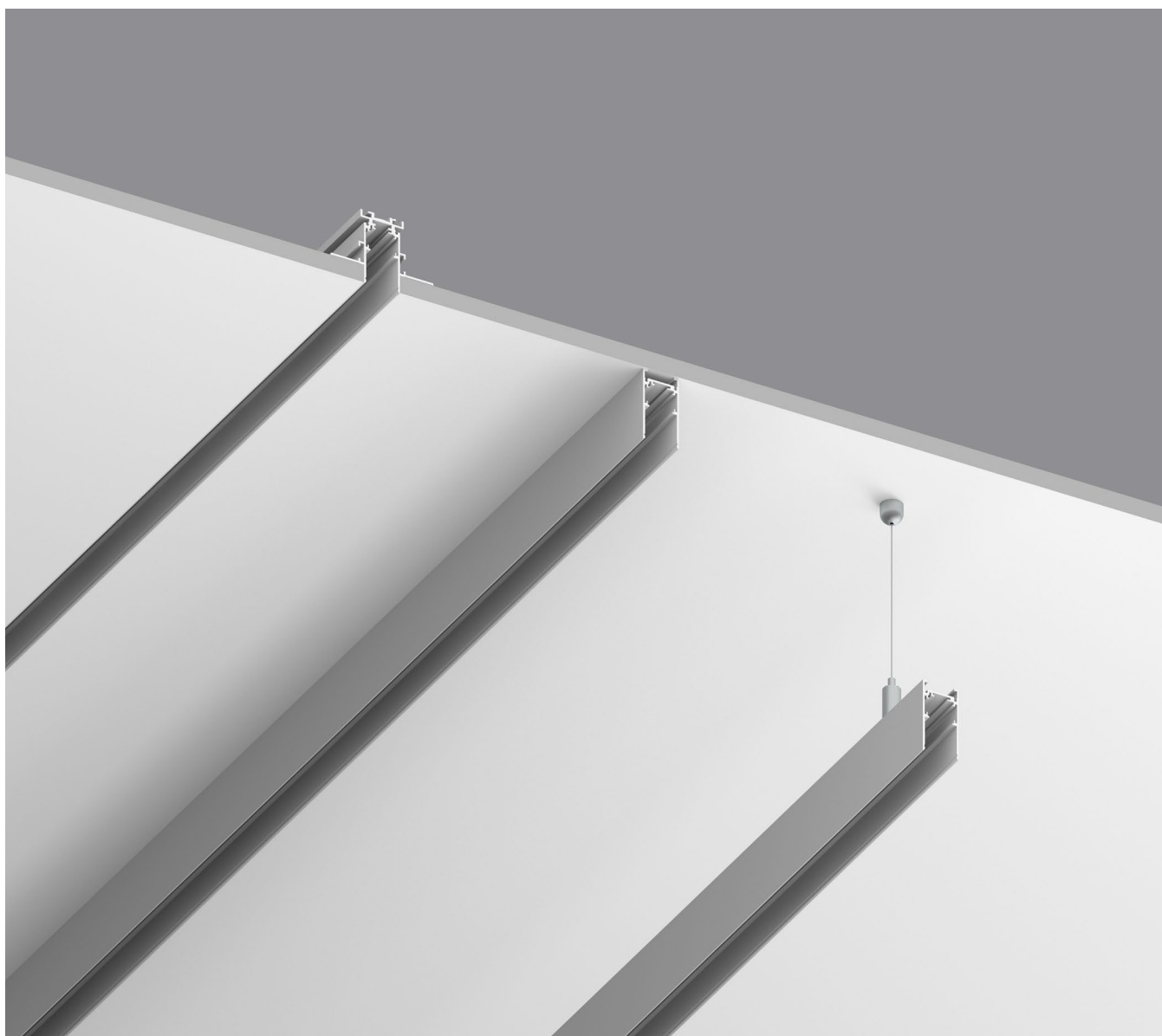
INDEX

22-23

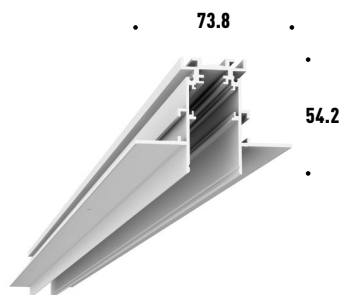
TRACKS



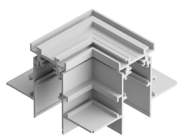
- Low Voltage System.
- Minimal design.
- Different kinds of applications.
- Wide range of accessories.



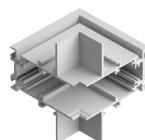
RECESSED



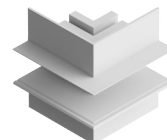
2m TRACK | 15324
3m TRACK | 15325
Different Lengths | upon request



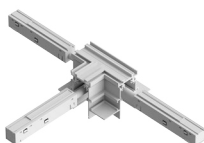
"L" CONNECTOR | 15326



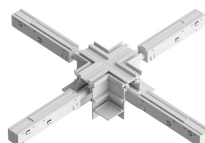
"L" CONNECTOR IN | 15327



"L" CONNECTOR OUT | 15328

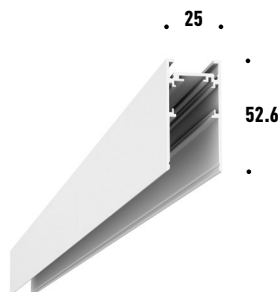


"T" CONNECTOR | 15380



"X" CONNECTOR | 15378

SURFACE/SUSPENDED*



2m TRACK | 15330
3m TRACK | 15276
Different Lengths | upon request



HANGING KIT* Chrome | 15355
 Black | 15243



DRIVER 200W** | 15357



DRIVER 100W** | 15277



"L" CONNECTOR | 15332



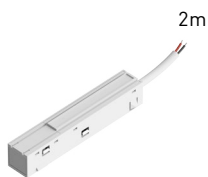
"T" CONNECTOR | 15384



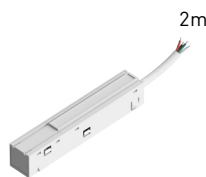
"X" CONNECTOR | 15382



CONNECTOR STRAIGHT | 15376



LIVE END | 15281



LIVE END DIM | 15333

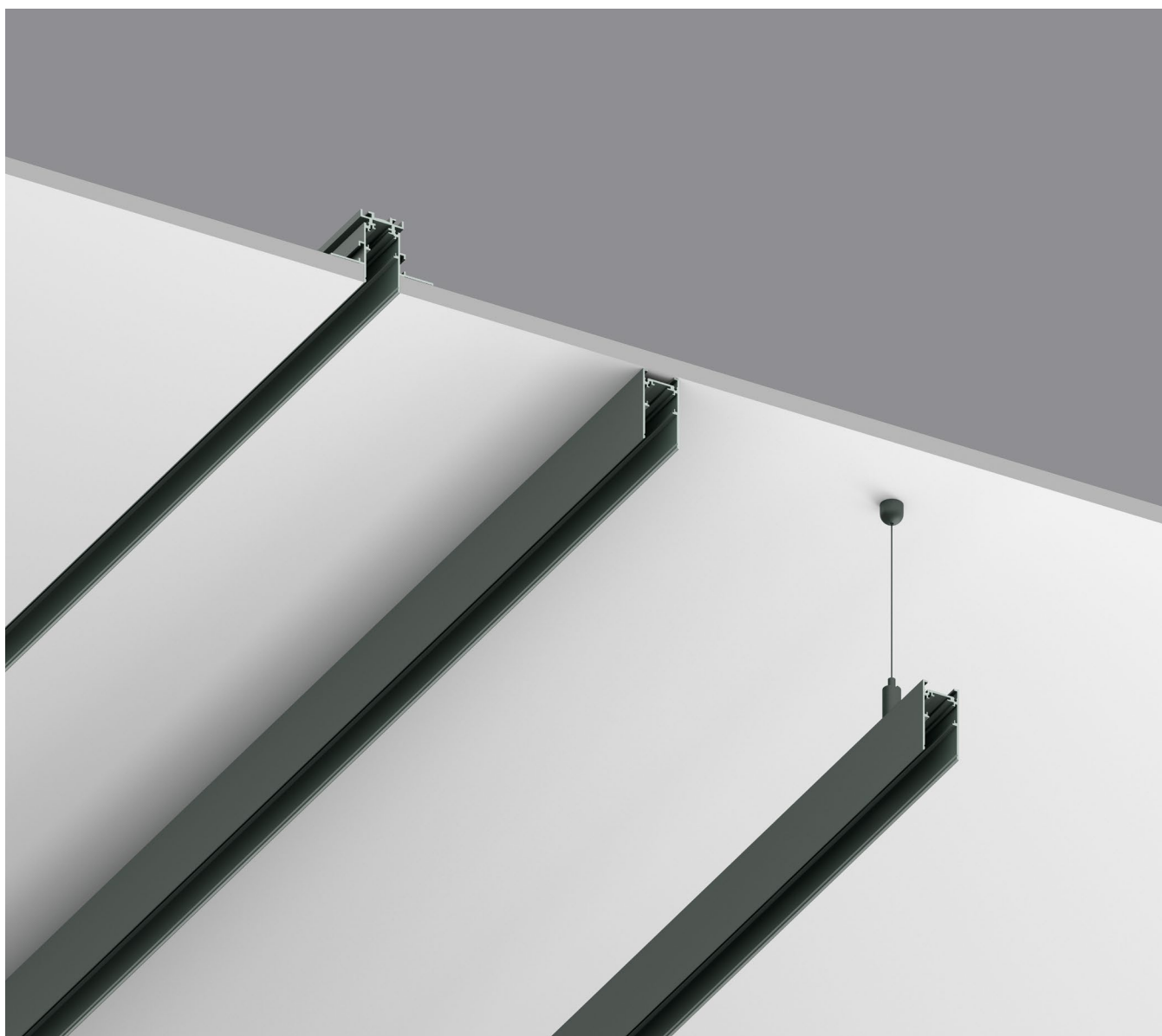


CONNECTOR | 15334

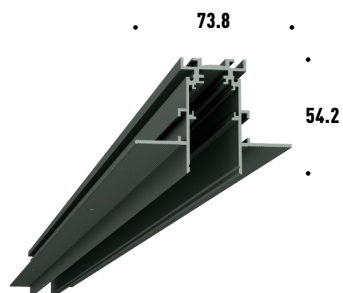
TRACKS



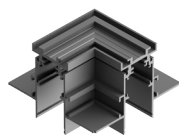
- Low Voltage System.
- Minimal design.
- Different kinds of applications.
- Wide range of accessories.



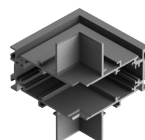
RECESSED



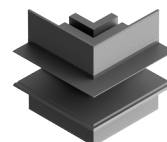
2m TRACK | 15236
3m TRACK | 15237
Different Lengths | upon request



"L" CONNECTOR | 15238



"L" CONNECTOR IN | 15239



"L" CONNECTOR OUT | 15240

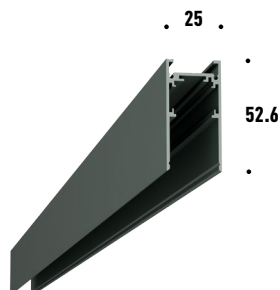


"T" CONNECTOR | 15379



"X" CONNECTOR | 15377

SURFACE/SUSPENDED*



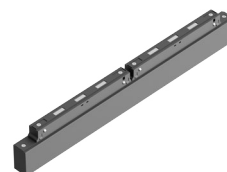
2m TRACK | 15329
3m TRACK | 15242
Different Lengths | upon request



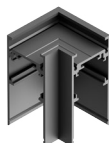
HANGING KIT* Black | 15243
 Chrome | 15355



DRIVER 200W** | 15356



DRIVER 100W** | 15272



"L" CONNECTOR | 15244



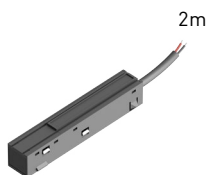
"T" CONNECTOR | 15383



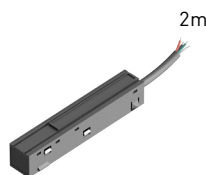
"X" CONNECTOR | 15381



CONNECTOR STRAIGHT | 15375



LIVE END | 15280

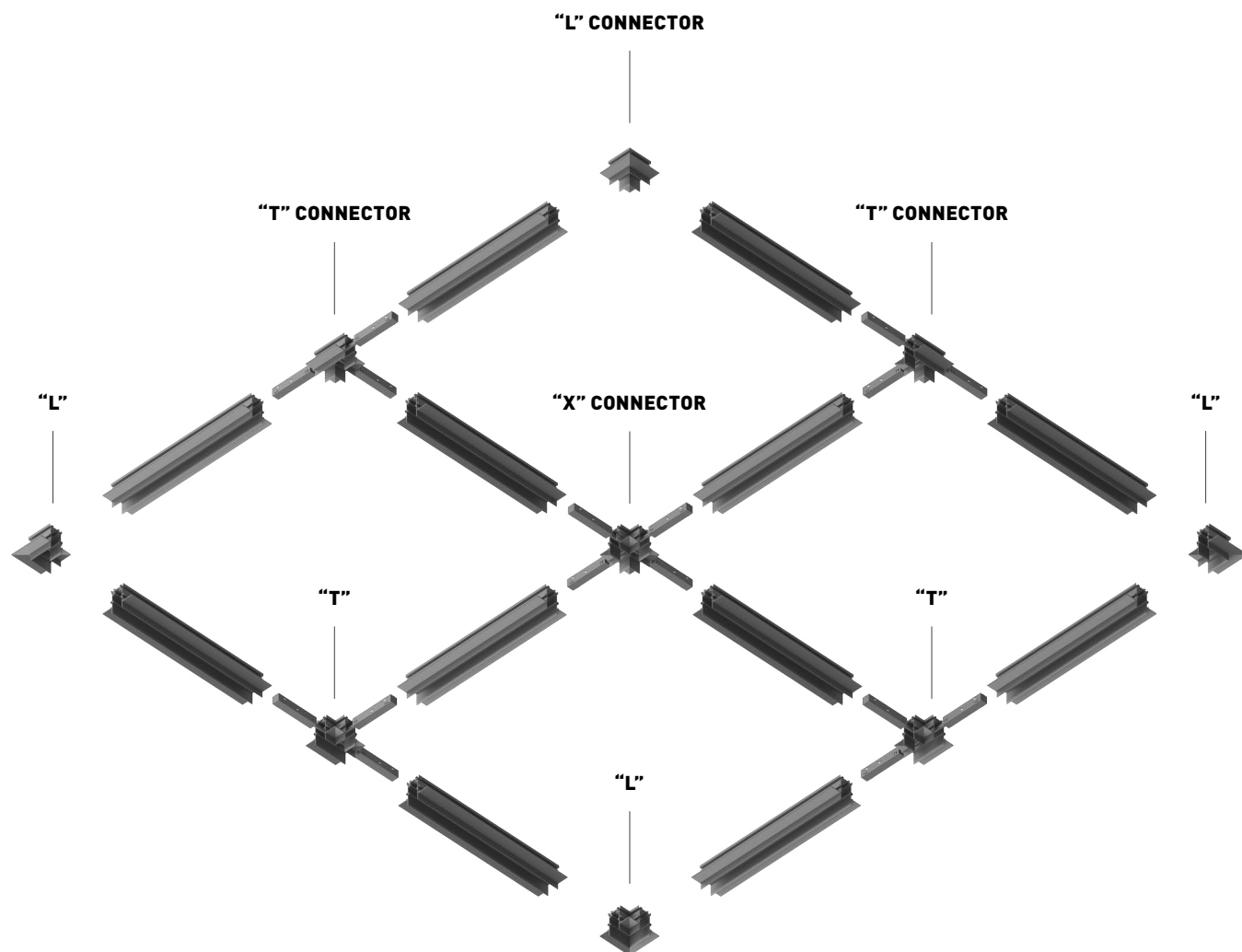


LIVE END DIM | 15247

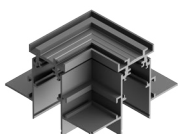


CONNECTOR | 15248

TRACKS CONNECTORS



RECESSED



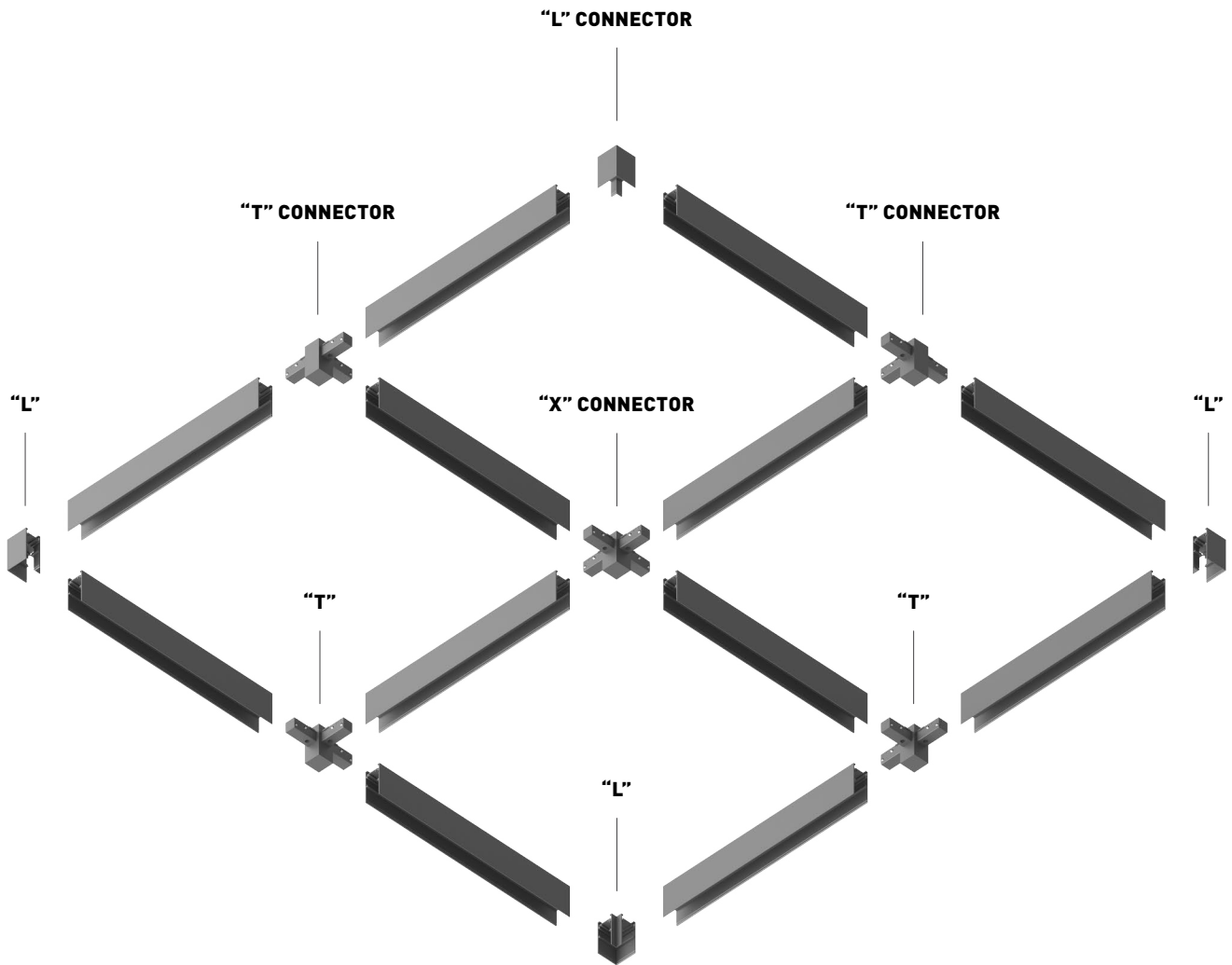
"L" CONNECTOR | B-15238
| W-15326



"T" CONNECTOR | B-15379
| W-15380



"X" CONNECTOR | B-15377
| W-15378



SURFACE/SUSPENDED



"L" CONNECTOR | B-15244
| W-15332



"T" CONNECTOR | B-15383
| W-15384



"X" CONNECTOR | B-15381
| W-15382

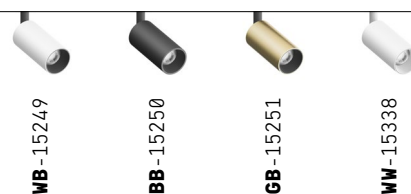
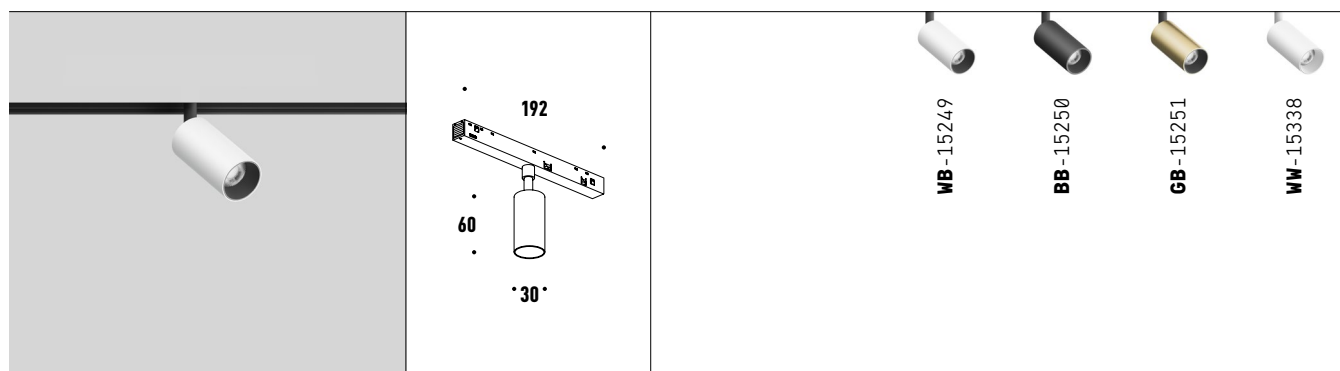
TON



- Excellent optical control.
- Wide range of accessories.
- Integration with Low Voltage.
- DALI version available.
- CRI 90.

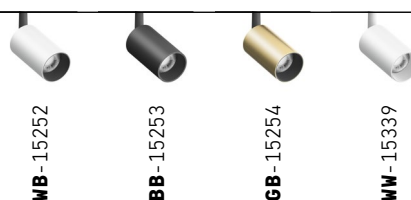
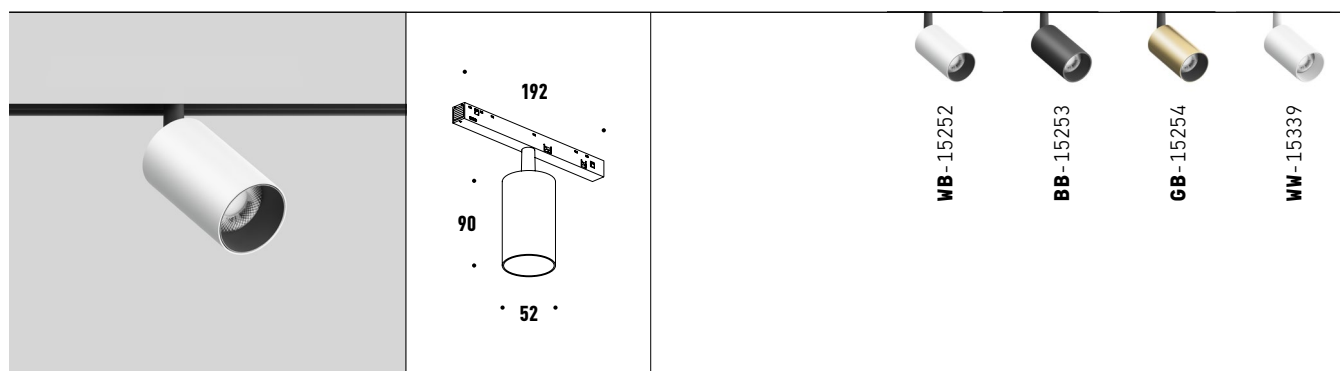


OPTIONS



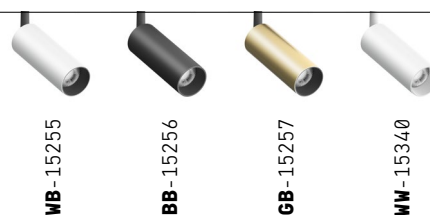
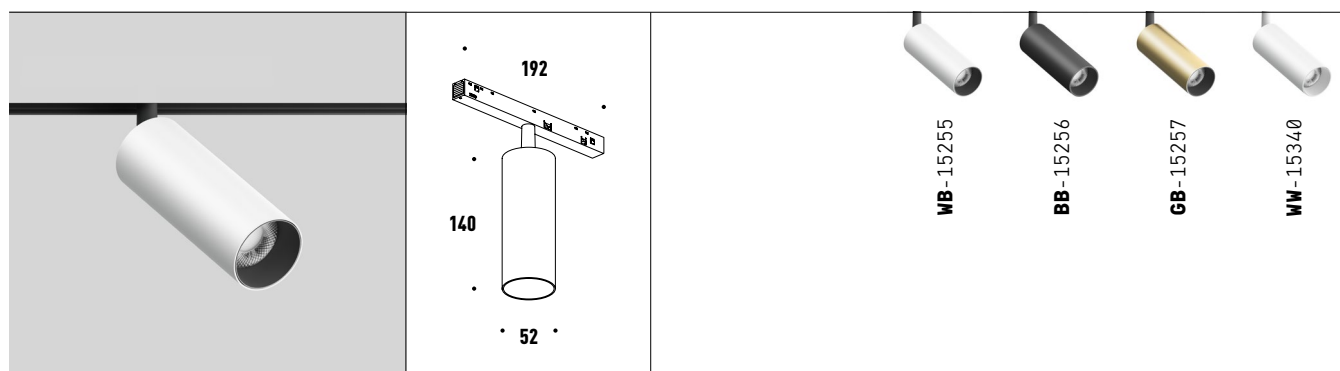
TON 6W

lm	K	W	Control	Lens	Dimming
420	3000	6	On-Off	24°	0-10V* 15278 DALI* 15279
					36°* 15362 50°* 15363



TON 11W

lm	K	W	Control	Lens	Dimming
925	3000	11	On-Off	30°	0-10V* 15278 DALI* 15279
					15°* 15265 50°* 15266



TON 16W

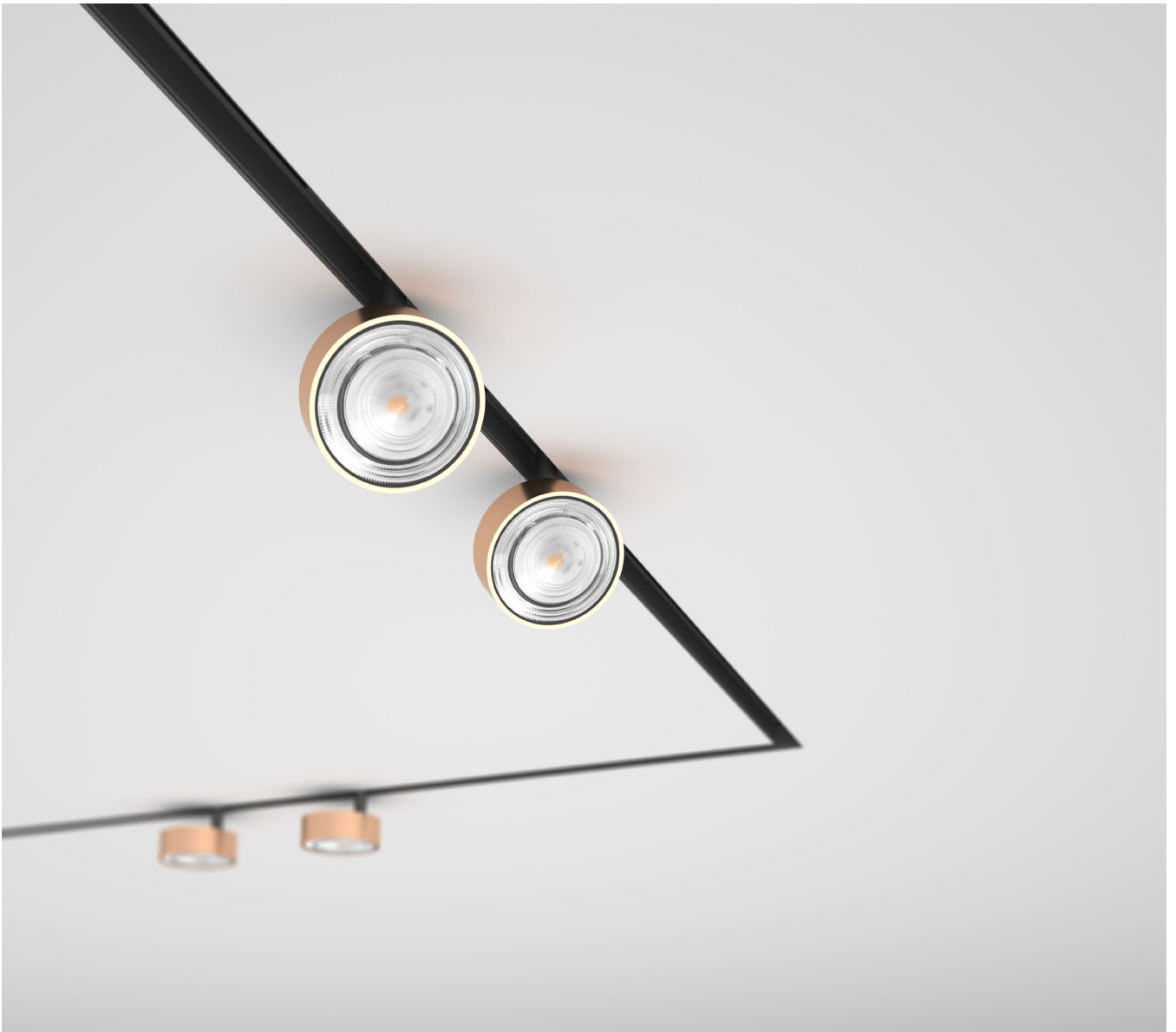
lm	K	W	Control	Lens	Dimming
1310	3000	16	On-Off	30°	0-10V* 15278 DALI* 15279
					15°* 15265 50°* 15266



* not included

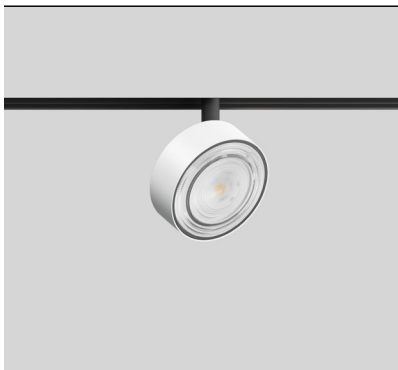
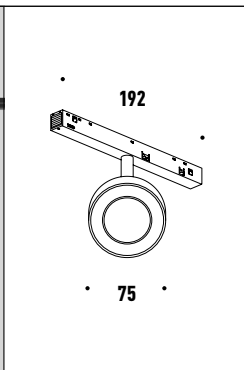


TOMI

- Excellent optical control.
- Available in different finishes.
- Integration with Low Voltage.
- DALI version available.
- CRI 90.







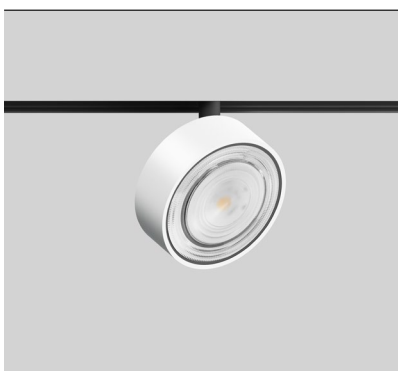
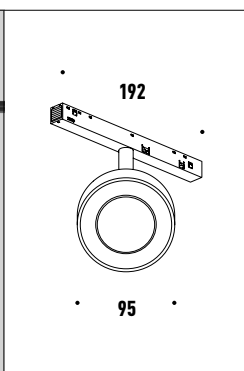




OPTIONS





			 Total White-15360				 Total Black-15361
--	--	--	---	--	--	--	---

TOMI 9W

lm	K	W	Control	Lens	Dimming	 Brushed Gold* 15348	 Brushed Rose Gold* 15350	 Brushed Chrome* 15352	 Matt White* 15354
					0-10V* 15278				
					DALI* 15279				
640	3000	9	On-Off	40°	15°* 15346				

			 Total White-15358				 Total Black-15359
---	--	---	---	--	--	--	---

TOMI 13W

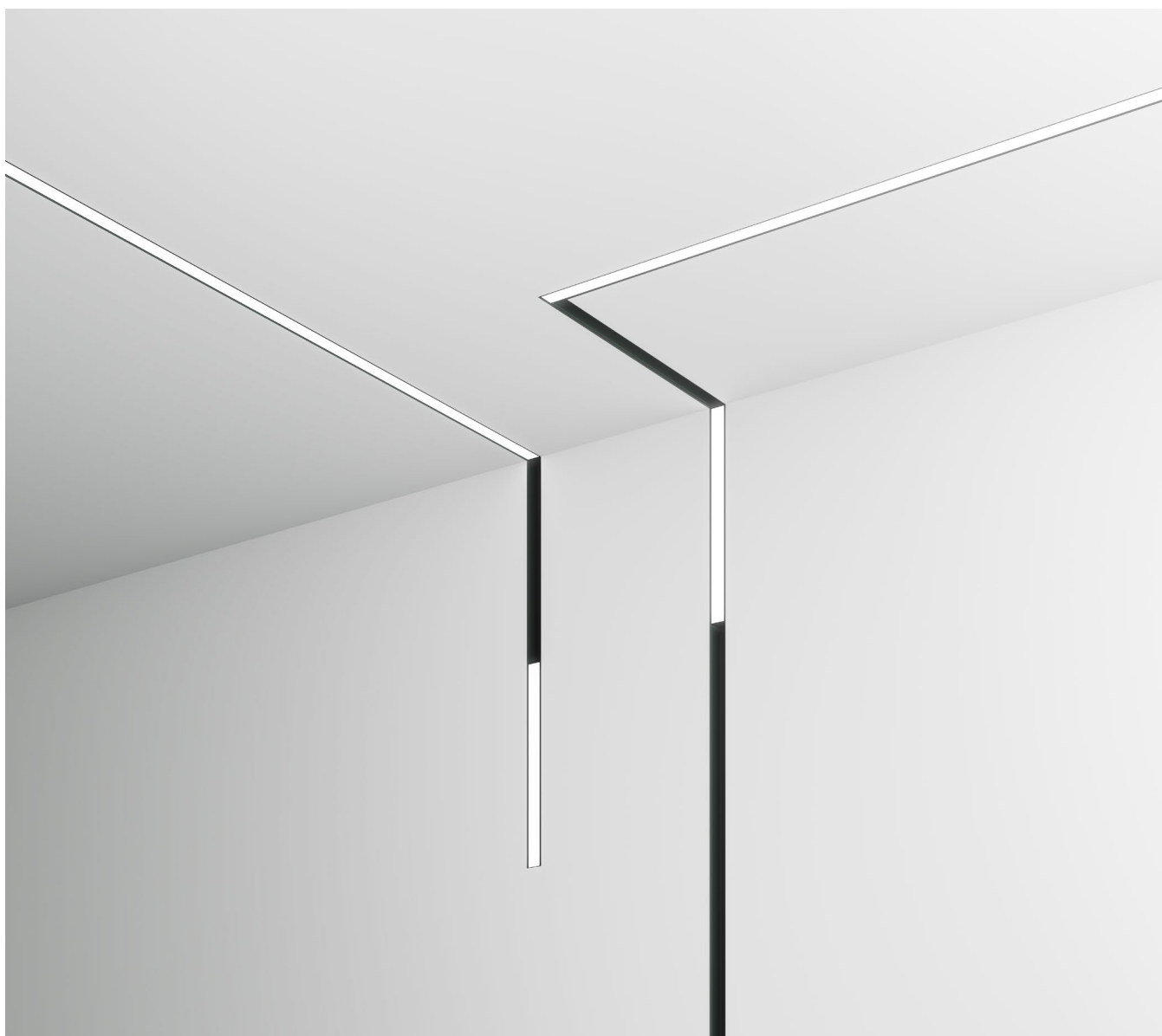
lm	K	W	Control	Lens	Dimming	 Brushed Gold* 15347	 Brushed Rose Gold* 15349	 Brushed Chrome* 15351	 Matt White* 15353
					0-10V* 15278				
					DALI* 15279				
1260	3000	13	On-Off	30°	15°* 15345				

* not included

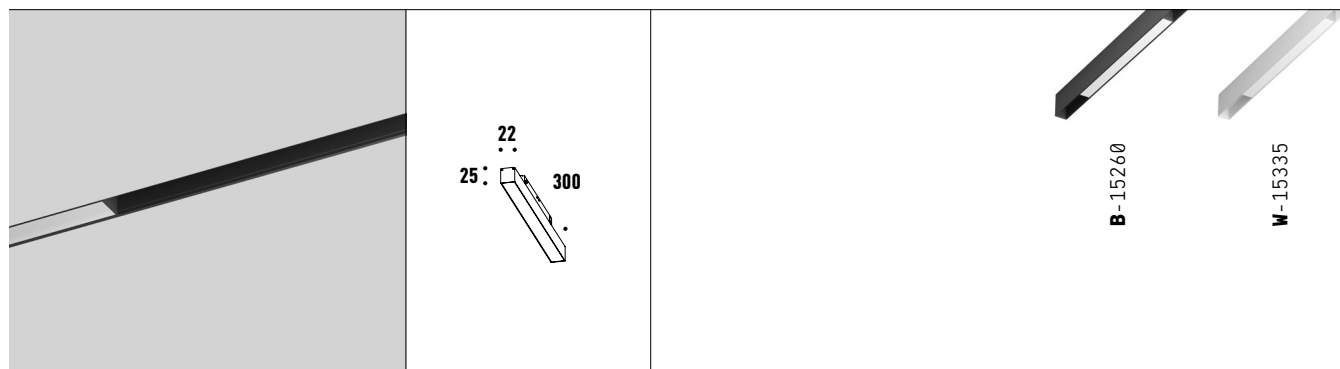
LIGHT STRIPE



- Clean minimal design.
- Diffused light effect.
- Integration with Low Voltage.
- DALI version available.

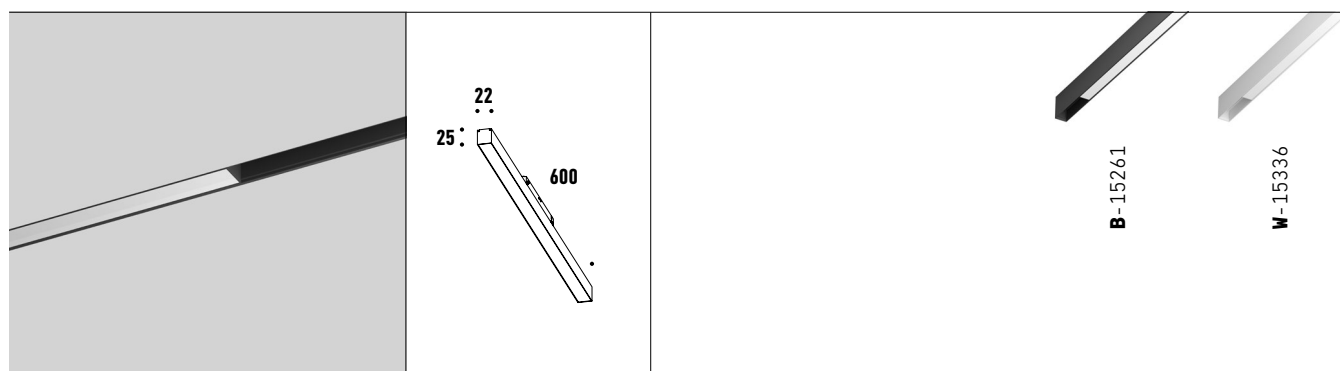


OPTIONS



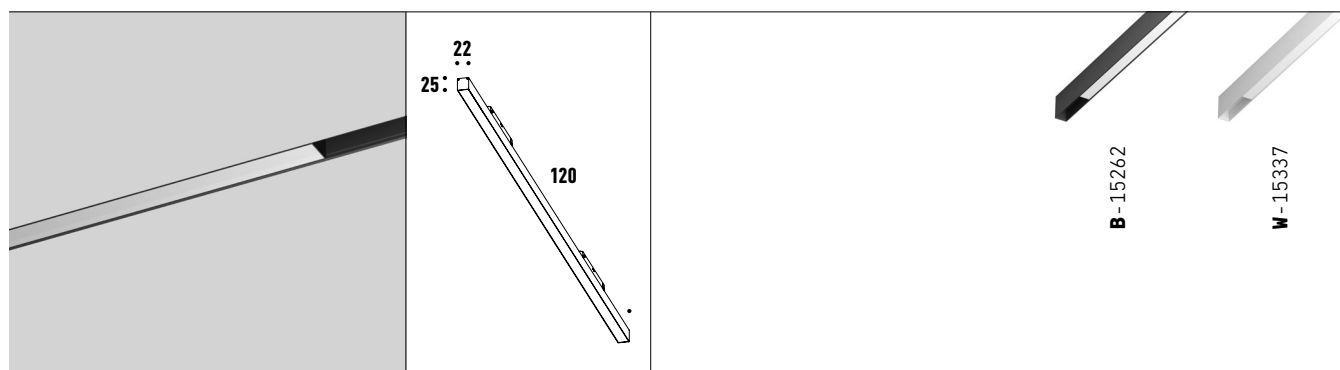
LIGHT STRIPE 30cm

lm	K	W	Control	Lens	Dimming
625	3000	14	On-Off	90°	0-10V* 15278
					DALI* 15279



LIGHT STRIPE 60cm

lm	K	W	Control	Lens	Dimming
1090	3000	20	On-Off	90°	0-10V* 15278
					DALI* 15279



LIGHT STRIPE 120cm

lm	K	W	Control	Lens	Dimming
1850	3000	30	On-Off	90°	0-10V* 15278
					DALI* 15279

* not included

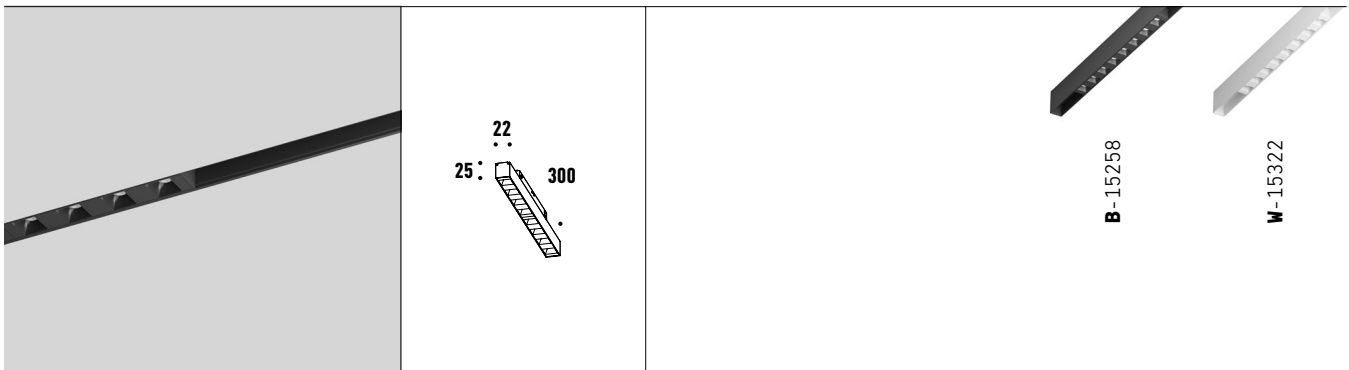
DOTS

- Excellent optical control.
- Dark Light effect.
- Integration with Low Voltage.
- DALI version available.
- CRI 90.



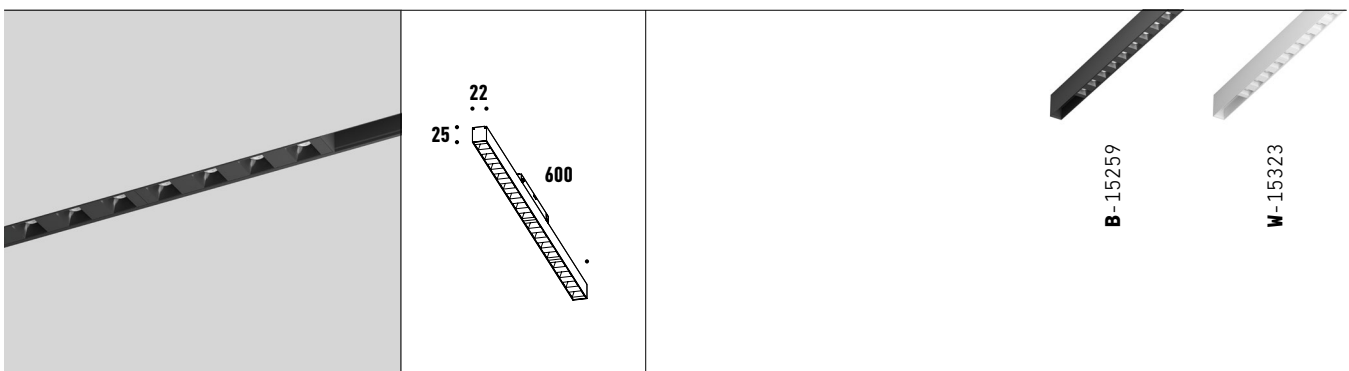


OPTIONS



DOTS 30cm

lm	K	W	Control	Lens	Dimming
1320	3000	14	On-Off	24°	0-10V* 15278
					DALI* 15279



DOTS 60cm

lm	K	W	Control	Lens	Dimming
1955	3000	20	On-Off	24°	0-10V* 15278
					DALI* 15279

* not included

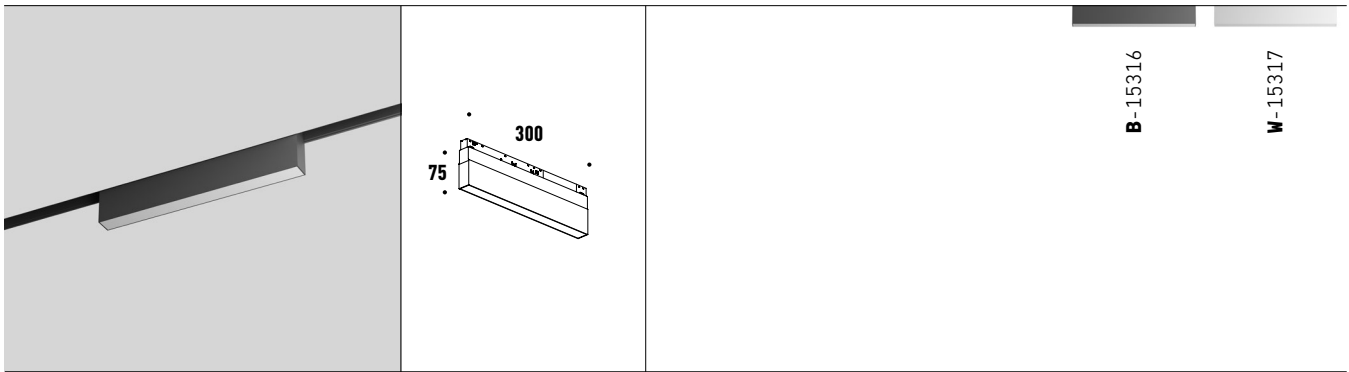
OUT



- Clean minimal design.
- Diffused light effect.
- Integration with Low Voltage.
- DALI version available.



OPTIONS

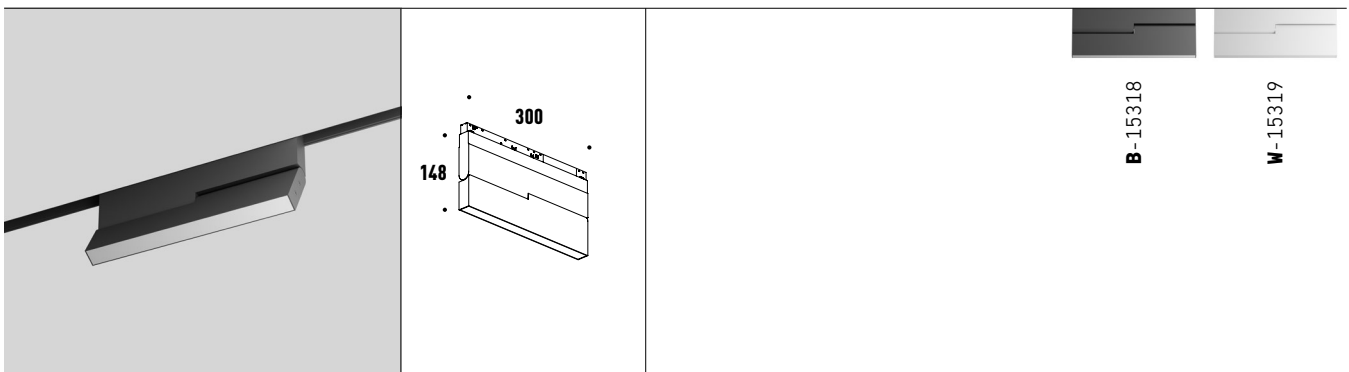


B-15316

W-15317

OUT 30cm

lm	K	W	Control	Lens	Dimming
2180	3000	25	On-Off	90°	0-10V* 15278
					DALI* 15279

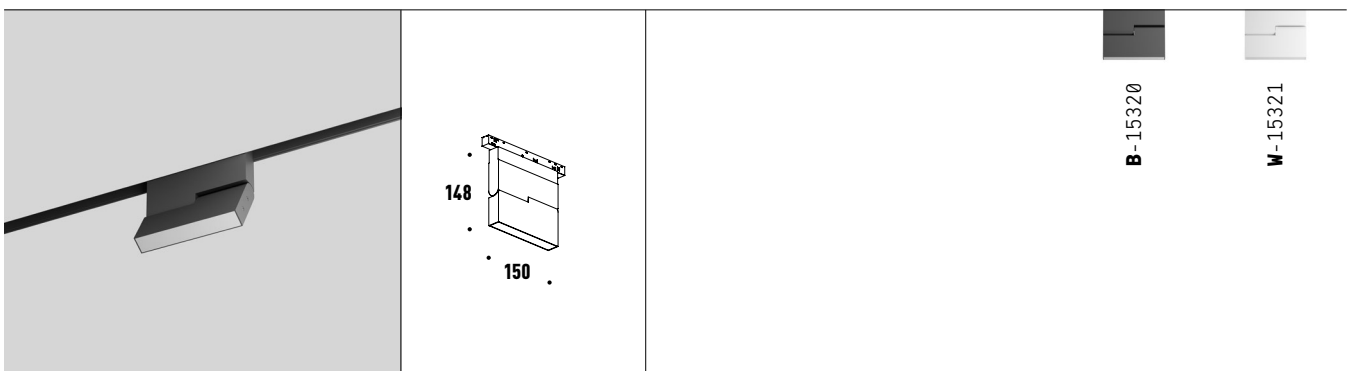


B-15318

W-15319

BOOK 30cm

lm	K	W	Control	Lens	Dimming
2180	3000	25	On-Off	90°	0-10V* 15278
					DALI* 15279



B-15320

W-15321

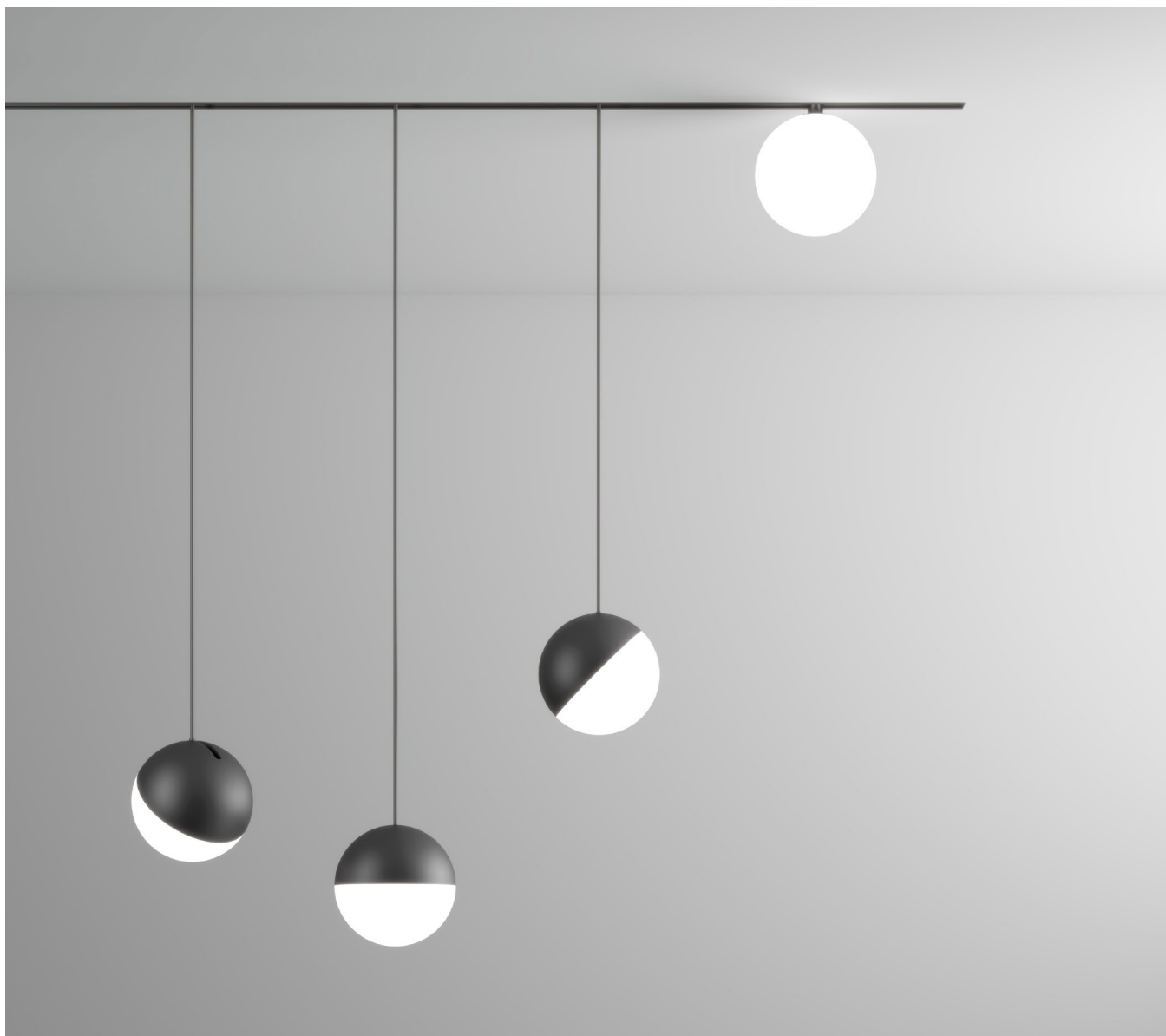
BOOK 15cm

lm	K	W	Control	Lens	Dimming
1035	3000	15	On-Off	90°	0-10V* 15278
					DALI* 15279

* not included

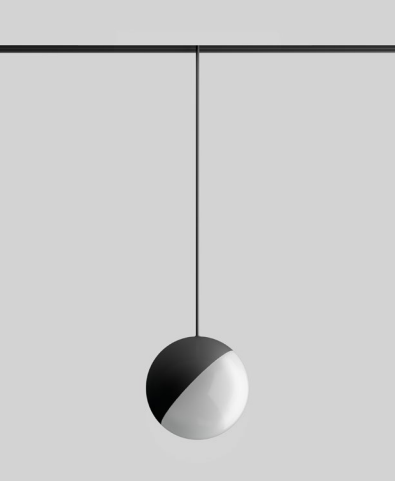
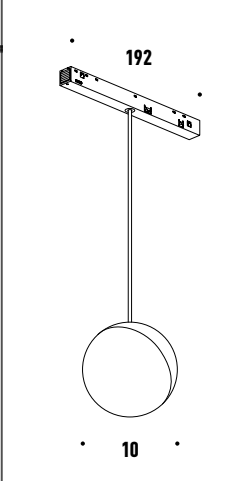
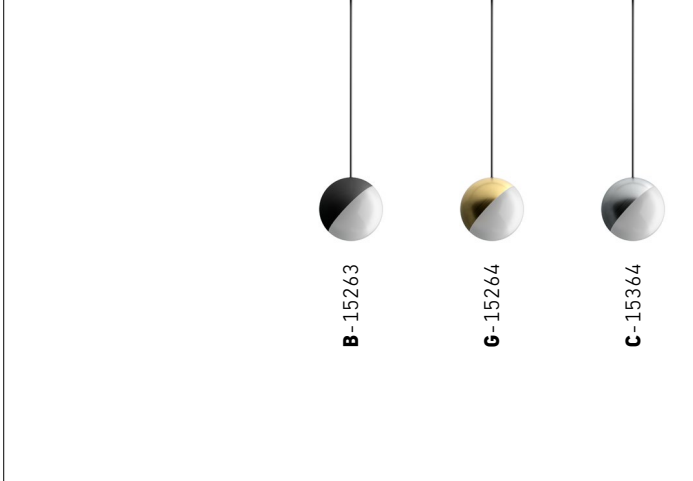
MOON

- Clean minimal design.
- Diffused light effect.
- Available in different finishes.
- Integration with Low Voltage.
- DALI version available.



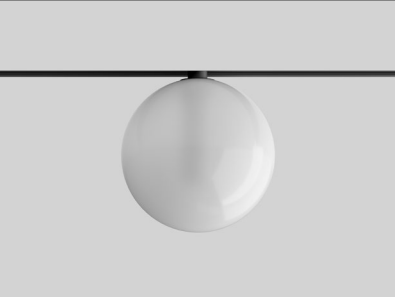
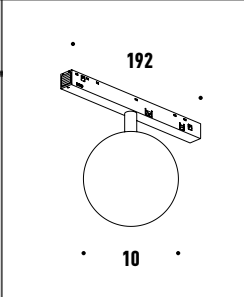



OPTIONS

		
--	--	---

MOON

lm	K	W	Control	Lens	Dimming
260	3000	8	On-Off	90°	0-10V* 15278
					DALI* 15279

		
---	---	--

GLASS BALL

lm	K	W	Control	Lens	Dimming
216	3000	4.5	On-Off	90°	0-10V* 15278
					DALI* 15279

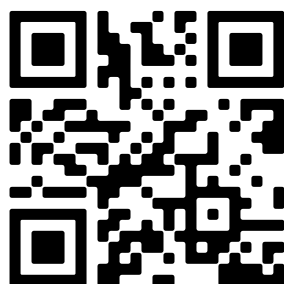
* not included

Item no.	Page	Product
15236	7	Reccesed Track-2m (Black)
15237	7	Reccesed Track-3m (Black)
15238	7,8	Recessed "L" Connector (Black)
15239	7	Recessed "L" Connector IN (Black)
15240	7	Recessed "L" Connector OUT (Black)
15242	7	Surface Track-3m (Black)
15243	7	Hanging Kit (Black)
15244	7,9	Surface "L" Connector (Black)
15247	7	Live End-DIM (Black)
15248	7	Connector (Black)
15249	11	TON 6W (White-Black)
15250	11	TON 6W (Total Black)
15251	11	TON 6W (Gold-Black)
15252	11	TON 11W (White-Black)
15253	11	TON 11W (Total Black)
15254	11	TON 11W (Gold-Black)
15255	11	TON 16W (White-Black)
15256	11	TON 16W (Total Black)
15257	11	TON 16W (Gold-Black)
15258	17	DOTS 14W (Black)
15259	17	DOTS 20W (Black)
15260	15	LIGHT STRIPE 14W-30cm (Black)
15261	15	LIGHT STRIPE 20W-60cm (Black)
15262	15	LIGHT STRIPE 30W-120cm (Black)
15263	21	MOON 8W (Black)
15264	21	MOON 8W (Gold)

Item no.	Page	Product
15265	11	TON 44 Lens (15°)
15266	11	TON 44 Lens (50°)
15267	11	TON Honeycomb Diffuser
15268	11	TON 44 Foggy Diffuser
15269	11	TON 44 Line Diffuser
15270	11	TON 44 Acrylic Ring+Connector
15272	7	Driver Box 100W (Black)
15276	5	Surface Track-3m (White)
15277	5	Driver Box 100W (White)
15316	19	OUT 30cm (Black)
15317	19	OUT 30cm (White)
15318	19	BOOK-30cm (Black)
15319	19	BOOK-30cm (White)
15320	19	BOOK-15cm (Black)
15321	19	BOOK-15cm (White)
15322	17	DOTS-30cm (White)
15323	17	DOTS-60cm (White)
15324	5	Reccesed Track-2m (White)
15325	5	Reccesed Track-3m (White)
15326	5,8	Recessed "L" Connector (White)
15327	5	Recessed "L" Connector IN (White)
15328	5	Recessed "L" Connector OUT (White)
15329	7	Surface Track-2m (Black)
15330	5	Surface TRACK-2m (White)
15332	5,9	Surface "L" Connector (White)
15333	5	Live End-DIM (White)
15334	5	Connector (White)

Item no.	Page	Product
15335	15	LIGHT STRIPE 14W-30cm (White)
15336	15	LIGHT STRIPE 20W-60cm (White)
15337	15	LIGHT STRIPE 30W-120cm (White)
15338	11	TON 6W (Total White)
15339	11	TON 11W (Total White)
15340	11	TON 16W (Total White)
15345	13	TOMI 13W-95mm Lens (15°)
15346	13	TOMI 9W-75mm Lens (15°)
15347	13	TOMI Ring-95mm (Brushed Gold)
15348	13	TOMI Ring-75mm (Brushed Gold)
15349	13	TOMI Ring-95mm (Brushed Rose Gold)
15350	13	TOMI Ring-75mm (Brushed Rose Gold)
15351	13	TOMI Ring-95mm (Brushed Chrome)
15352	13	TOMI Ring-75mm (Brushed Chrome)
15353	13	TOMI Ring-95mm (Matt White)
15354	13	TOMI Ring-75mm (Matt White)
15355	5	Hanging Kit (Chrome)
15356	7	Driver Box 200W (Black)
15357	5	Driver Box 200W (White)
15358	13	TOMI 13W-95mm (White)
15359	13	TOMI 13W-95mm (Black)
15360	13	TOMI 9W-75mm (White)
15361	13	TOMI 9W-75mm (Black)
15362	11	TON 6W Lens (36°)
15363	11	TON 6W Lens (50°)
15364	21	MOON 8W (Chrome)

Item no.	Page	Product
15375	7	Connector Straight (Black)
15376	5	Connector Straight (White)
15377	7,8	Recessed "X" Connector (Black)
15378	5,8	Recessed "X" Connector (White)
15379	7,8	Recessed "T" Connector (Black)
15380	5,8	Recessed "T" Connector (White)
15381	7,9	Surface "X" Connector (Black)
15382	5,9	Surface "X" Connector (White)
15383	7,9	Surface "T" Connector (Black)
15384	5,9	Surface "T" Connector (White)
15385	21	GLASS BALL 4.8W



FLOW

low voltage system

We Are C-LIGHT

Being a young company, we always focus on the most advanced LED technology.

As all relevant development processes are carried out in house, we can produce custom designs and create new collections followed by the latest trends quickly and flexibly.

DESIGNED in EUROPE MADE in CHINA

C-light factory is located in Zhongshan China. The lowered cost that we achieved is being passed directly on to you.

C-light has been working with European lighting designers to develop custom lights of the highest technical standard. C-light uses the best materials in the market with Hardness Quality Checks for each product. The result is Premium Quality with reasonable price.

HEADQUARTER

Hatnufa 7 St.
9342207 Jerusalem
Israel

LOGISTIC CENTER

Tsela ha-Har St. 47
7178127 Modein
Israel

T +972 (2) 6727811/2
F +972 (2) 6727813

office@clight-led.com
export@clight-led.com

Clight
by **Cabasso Group**

www.clight-led.com