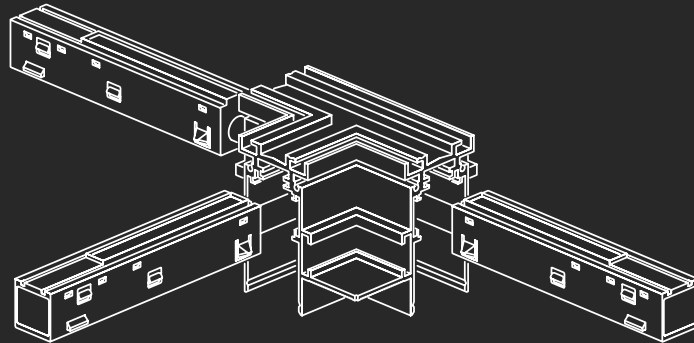
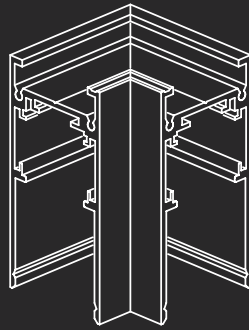
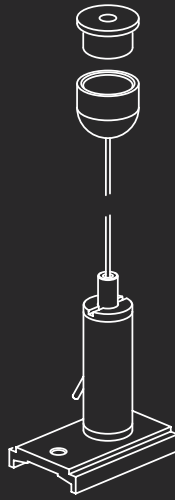


FLOW SYSTEM / COMPONENTS

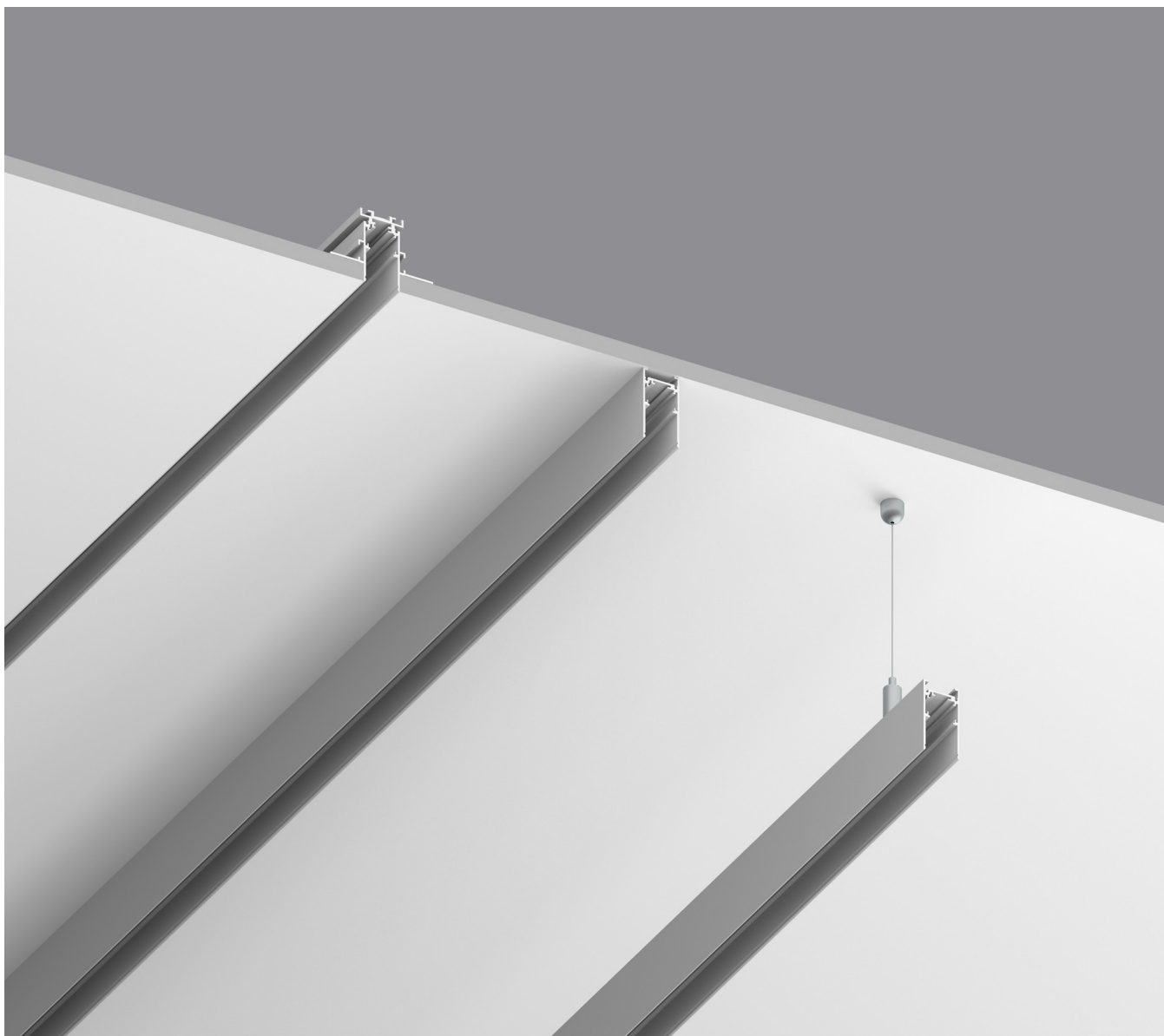


Clight

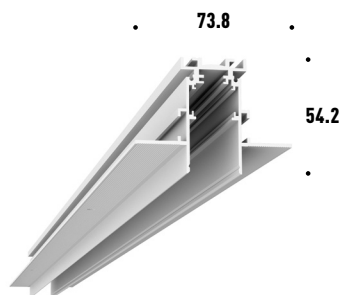
TRACKS



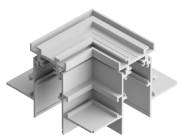
- Low Voltage System.
- Minimal design.
- Different kinds of applications.
- Wide range of accessories.



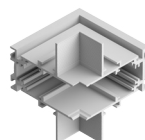
RECESSED



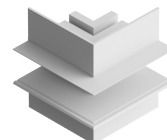
2m TRACK | 15324
3m TRACK | 15325
Different Lengths | upon request



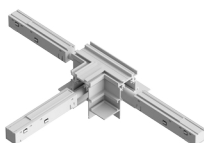
"L" CONNECTOR | 15326



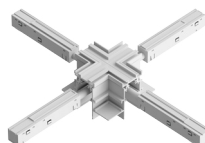
"L" CONNECTOR IN | 15327



"L" CONNECTOR OUT | 15328

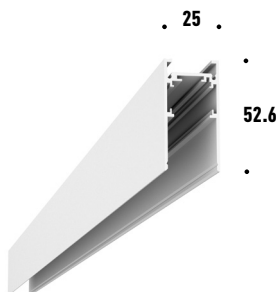


"T" CONNECTOR | 15380



"X" CONNECTOR | 15378

SURFACE/SUSPENDED*



2m TRACK | 15330
3m TRACK | 15276
Different Lengths | upon request



HANGING KIT* Chrome | 15355
 Black | 15243



DRIVER 200W** | 15357



DRIVER 100W** | 15277



"L" CONNECTOR | 15332



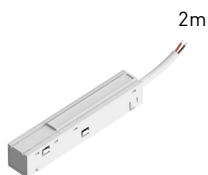
"T" CONNECTOR | 15384



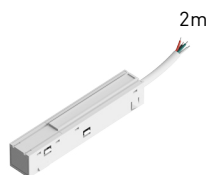
"X" CONNECTOR | 15382



CONNECTOR STRAIGHT | 15376



LIVE END | 15281



LIVE END DIM | 15333

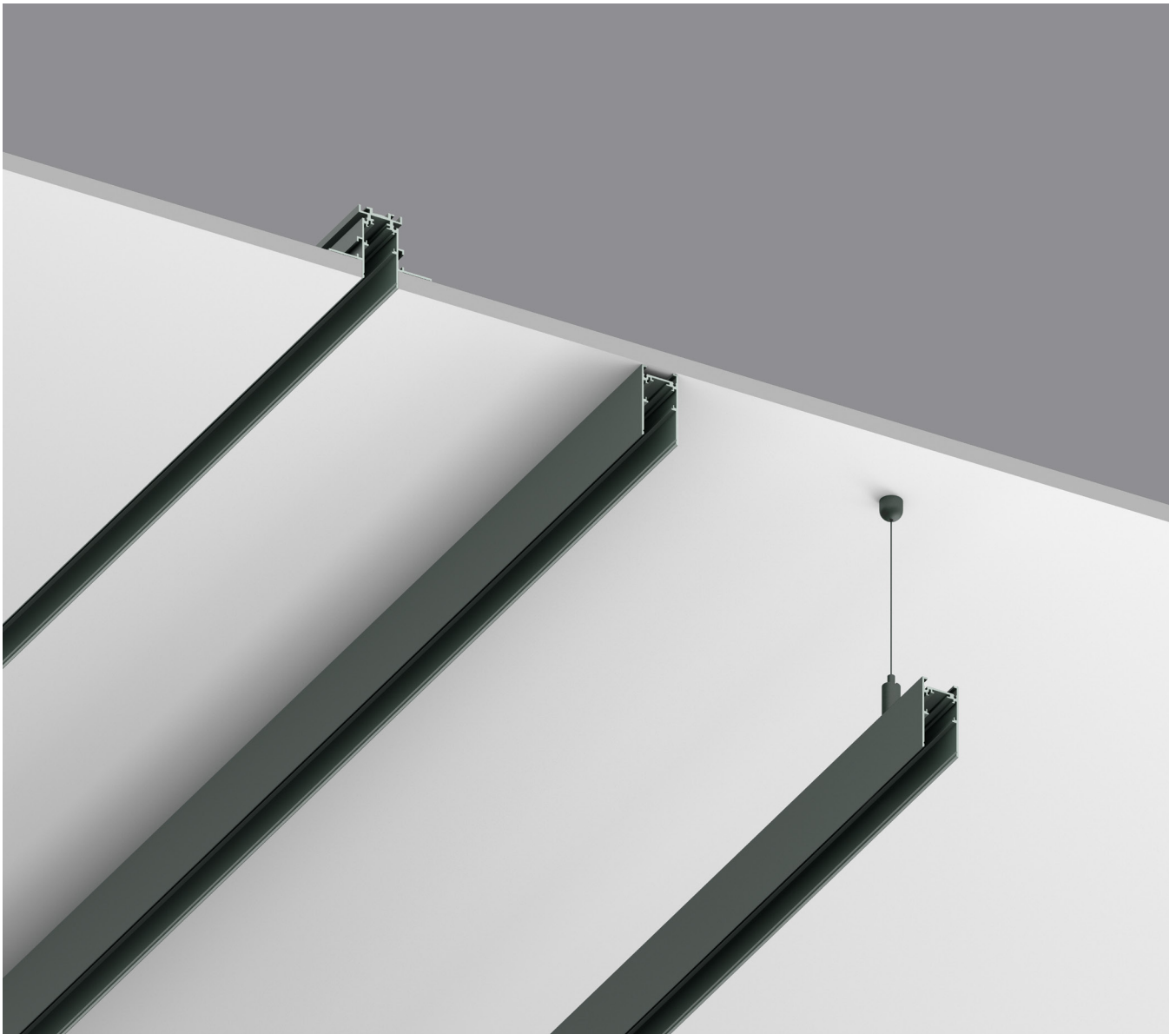


CONNECTOR | 15334

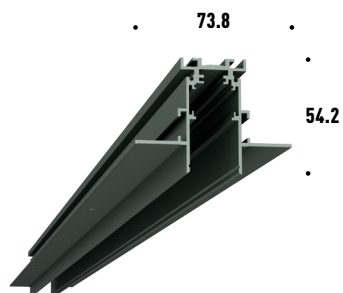
TRACKS



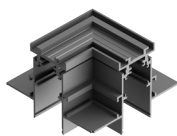
- Low Voltage System.
- Minimal design.
- Different kinds of applications.
- Wide range of accessories.



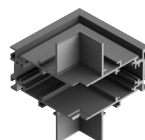
RECESSED



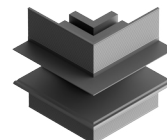
2m TRACK | 15236
3m TRACK | 15237
Different Lengths | upon request



"L" CONNECTOR | 15238



"L" CONNECTOR IN | 15239



"L" CONNECTOR OUT | 15240

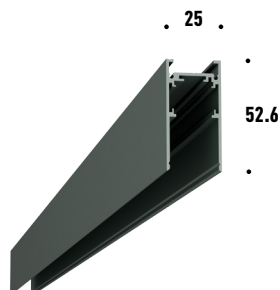


"T" CONNECTOR | 15379



"X" CONNECTOR | 15377

SURFACE/SUSPENDED*



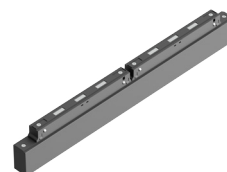
2m TRACK | 15329
3m TRACK | 15242
Different Lengths | upon request



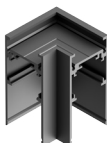
HANGING KIT* Black | 15243
Chrome | 15355



DRIVER 200W** | 15356



DRIVER 100W** | 15272



"L" CONNECTOR | 15244



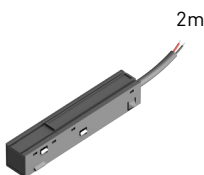
"T" CONNECTOR | 15383



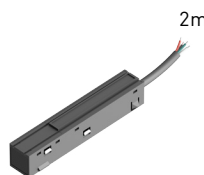
"X" CONNECTOR | 15381



CONNECTOR STRAIGHT | 15375



LIVE END | 15280

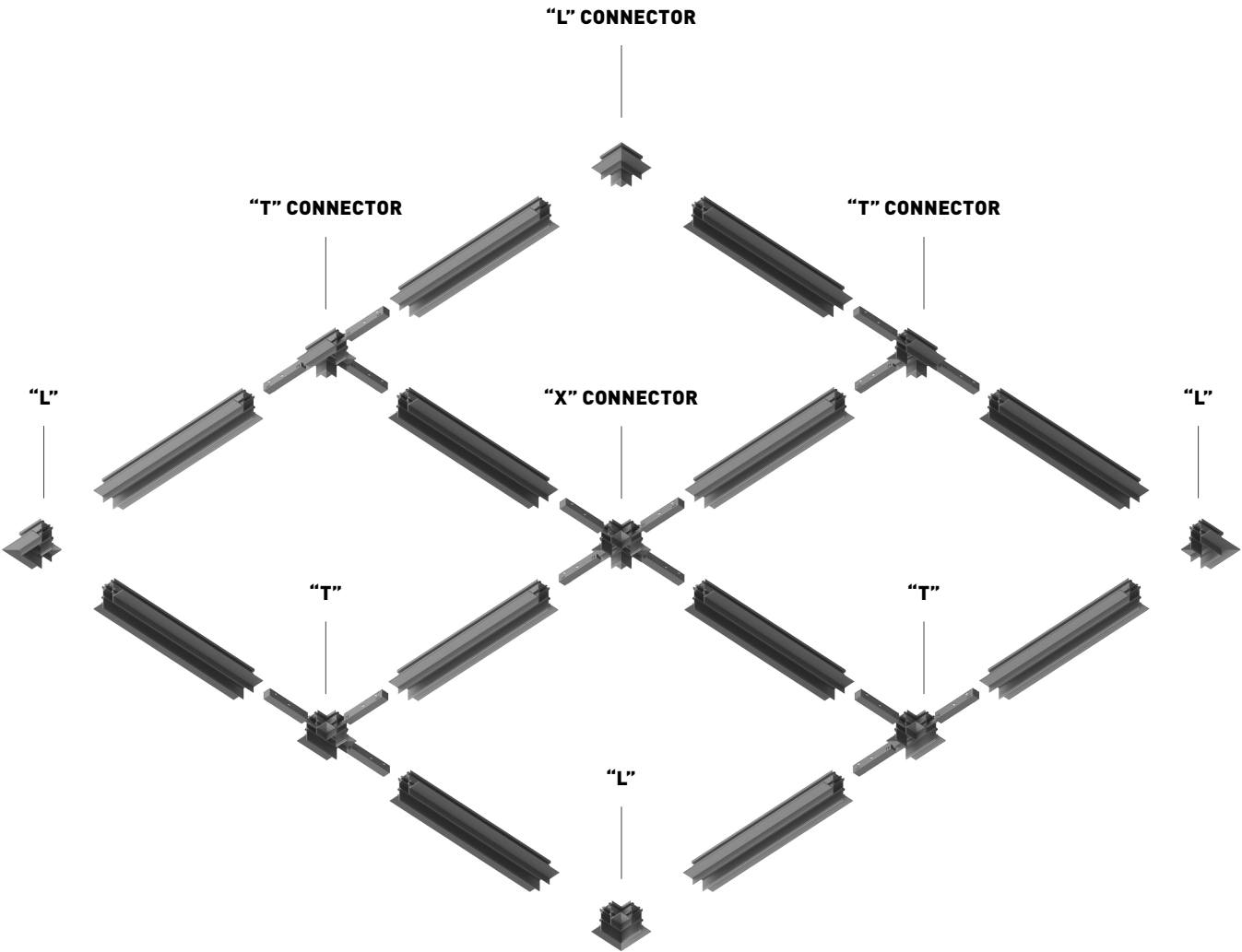


LIVE END DIM | 15247

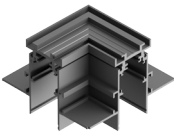


CONNECTOR | 15248

TRACKS CONNECTORS



RECESSED



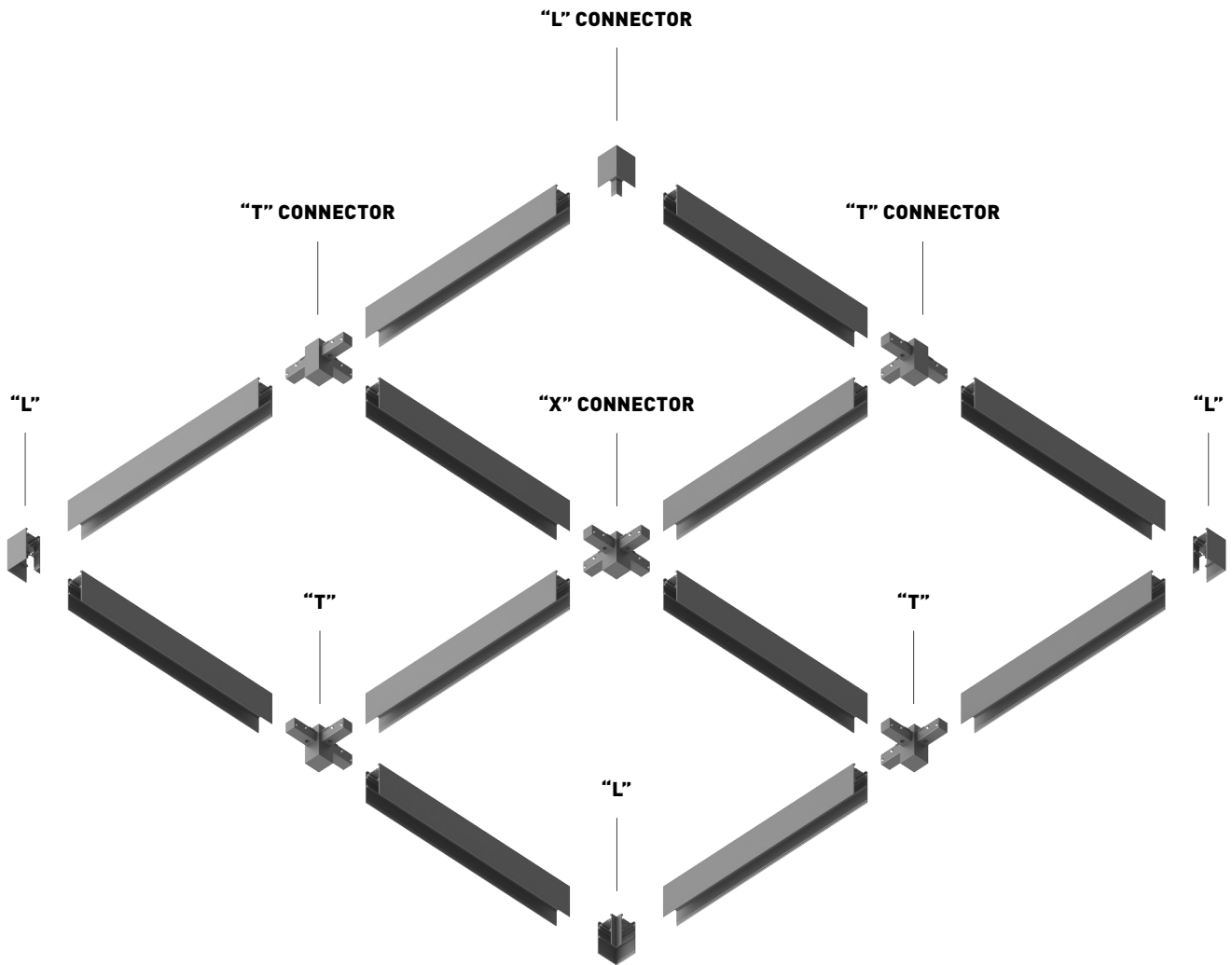
"L" CONNECTOR | B-15238
| W-15326



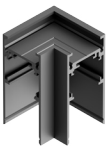
"T" CONNECTOR | B-15379
| W-15380



"X" CONNECTOR | B-15377
| W-15378



SURFACE/SUSPENDED



"L" CONNECTOR | B-15244
| W-15332



"T" CONNECTOR | B-15383
| W-15384



"X" CONNECTOR | B-15381
| W-15382

HEADQUARTER

Hatnufa 7 St.
9342207 Jerusalem
Israel

LOGISTIC CENTER

Tsela ha-Har St. 47
7178127 Modein
Israel

T +972 (2) 6727811/2
F +972 (2) 6727813

office@clight-led.com
export@clight-led.com

Clight
by **Cabasso Group**

www.clight-led.com